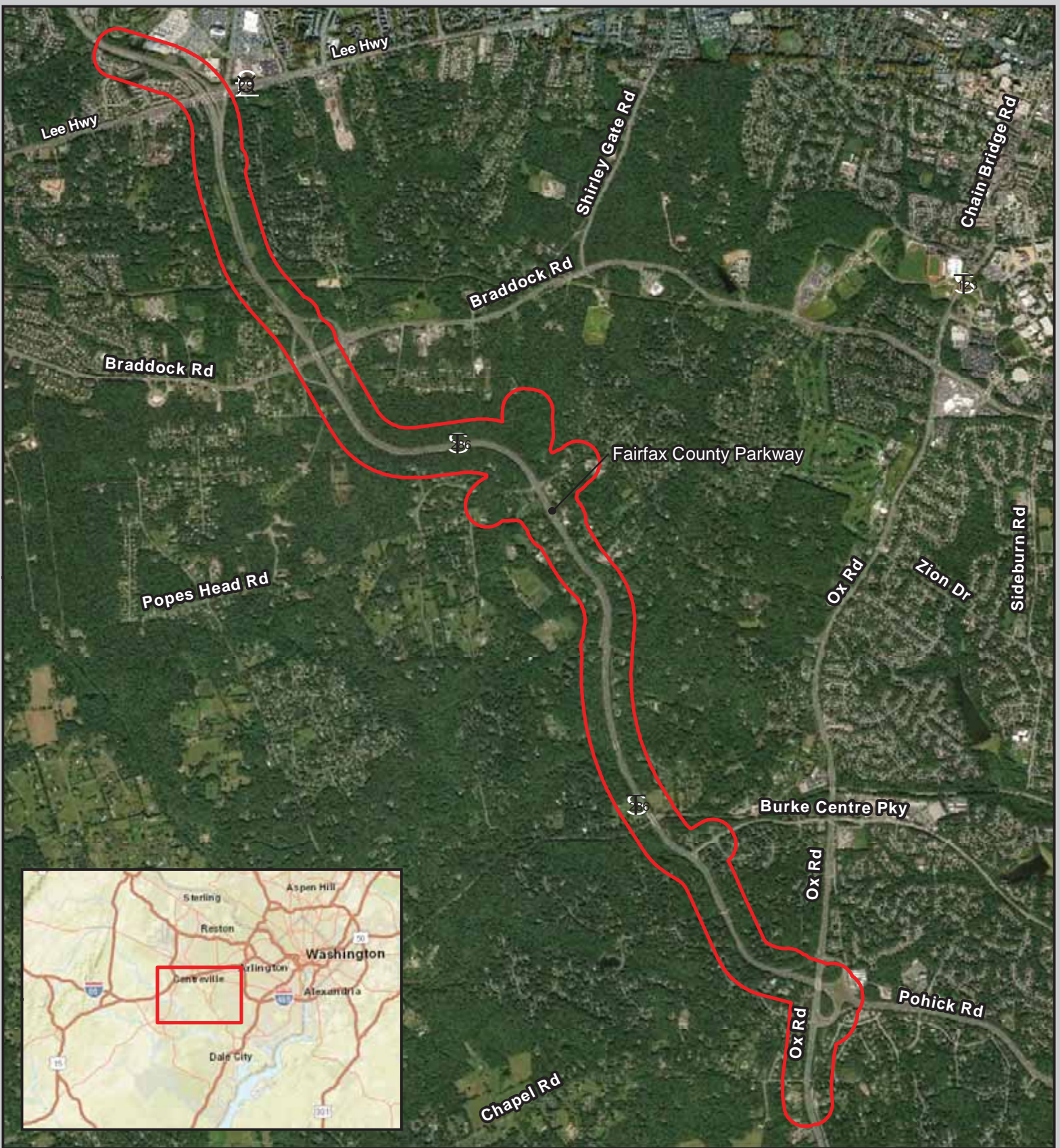



## **FIGURES**

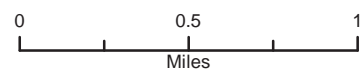


## Fairfax County Parkway Widening Project

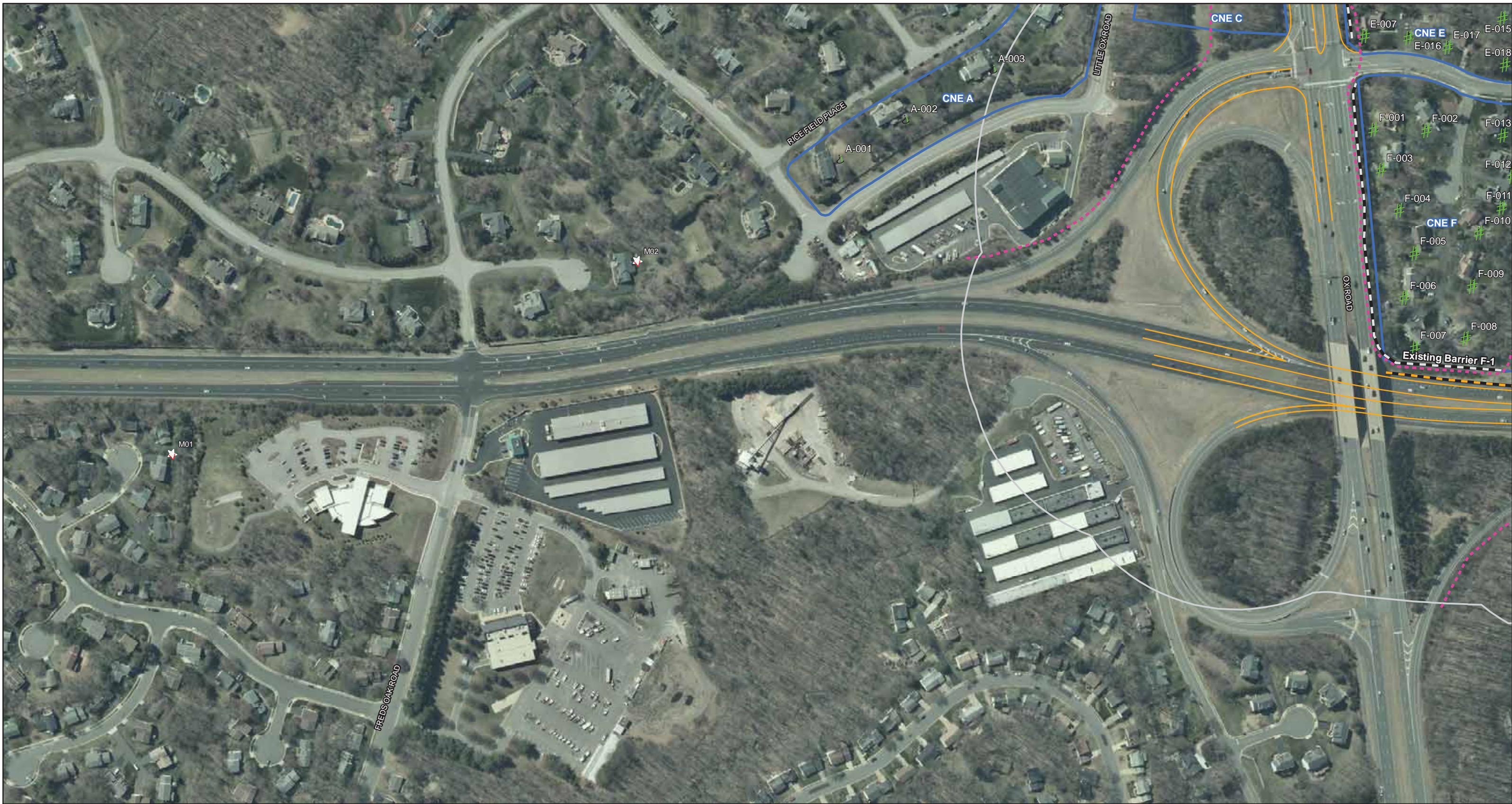
Fairfax County, Virginia  
 State: 0286-029-259, P101  
 UPC: 107937

 Project Study Area

**Figure 1**  
**Regional Location Map**







**Modeled Receivers**

*Behind Potential Barriers*

- Not Impacted not Benefited
- Benefited not Impacted
- Impacted and Benefited
- Impacted not Benefited
- Proposed Acquisition

*Behind Existing Barriers*

- Not Impacted

**Existing Barriers**

- Existing Barrier to Remain
- Existing Retaining Wall

**Potential Barriers**

- Barrier Feasible not Reasonable
- Barrier Feasible and Reasonable

**Monitoring Site**

- Monitoring Site

**Preliminary Design Edge of Pavement**

- Preliminary Design Edge of Pavement

**66 dB(A) Contour**

- 66 dB(A) Contour

**CNE Boundary**

- CNE Boundary

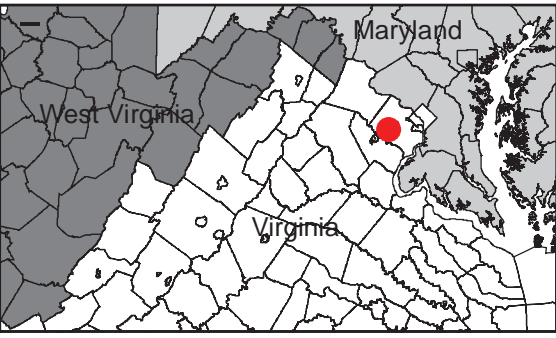
**500' Study Area**

- 500' Study Area

2

0 500 1,000  
Feet

Aerial imagery courtesy of Fairfax County GIS Imagery Service



**Fairfax County Parkway Widening Project**

VDOT UPC: 107937  
VDOT Project Number: 0286-029-259, P101

**Preliminary Noise Analysis**  
Fairfax County, Virginia

**Figure: 2 - 1**  
**Detailed Study Area Map**

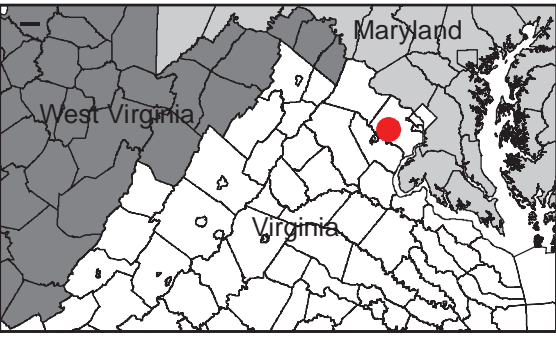




<p><b>Modeled Receivers</b></p> <p><i>Behind Potential Barriers</i></p> <ul style="list-style-type: none"> <li> Not Impacted not Benefited</li> <li> Benefited not Impacted</li> <li> Impacted and Benefited</li> <li> Impacted not Benefited</li> <li> Proposed Acquisition</li> </ul> <p><i>Behind Existing Barriers</i></p> <ul style="list-style-type: none"> <li> Not Impacted</li> </ul>	<p><b>Existing Barriers</b></p> <ul style="list-style-type: none"> <li> Existing Barrier to Remain</li> <li> Existing Retaining Wall</li> </ul> <p><b>Potential Barriers</b></p> <ul style="list-style-type: none"> <li> Barrier Feasible not Reasonable</li> <li> Barrier Feasible and Reasonable</li> </ul>	<ul style="list-style-type: none"> <li> Monitoring Site</li> <li> Preliminary Design Edge of Pavement</li> <li> 66 dB(A) Contour</li> <li> CNE Boundary</li> <li> 500' Study Area</li> </ul>
--	---	--

0      500      1,000  
Feet

Aerial Imagery courtesy of Fairfax County GIS Imagery Service



**Fairfax County Parkway Widening Project**

VDOT UPC: 107937  
VDOT Project Number: 0286-029-259, P101

**Preliminary Noise Analysis**  
Fairfax County, Virginia

**Figure: 2 - 2**  
**Detailed Study Area Map**





**Modeled Receivers**

*Behind Potential Barriers*

- Not Impacted not Benefited
- Benefited not Impacted
- Impacted and Benefited
- Impacted not Benefited
- Proposed Acquisition

*Behind Existing Barriers*

- Not Impacted

**Existing Barriers**

- Existing Barrier to Remain
- Existing Retaining Wall

**Potential Barriers**

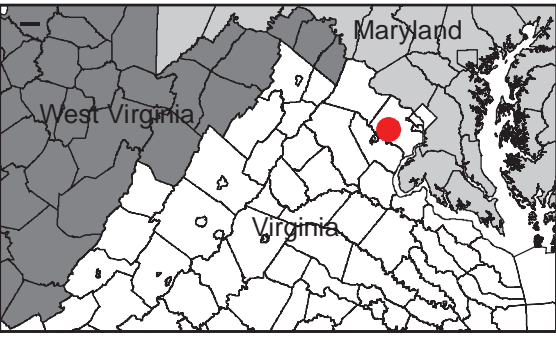
- Barrier Feasible not Reasonable
- Barrier Feasible and Reasonable

**Monitoring Site**

- Preliminary Design Edge of Pavement
- 66 dB(A) Contour
- CNE Boundary
- 500' Study Area

0 500 1,000  
Feet

*Aerial imagery courtesy of Fairfax County GIS Imagery Service*



**Fairfax County Parkway Widening Project**

VDOT UPC: 107937  
VDOT Project Number: 0286-029-259, P101

**Preliminary Noise Analysis**  
Fairfax County, Virginia

**Figure: 2 - 3**  
**Detailed Study Area Map**





**Modeled Receivers**

*Behind Potential Barriers*

- Not Impacted not Benefited
- Benefited not Impacted
- Impacted and Benefited
- Impacted not Benefited
- Proposed Acquisition

*Behind Existing Barriers*

- Not Impacted

**Existing Barriers**

- Existing Barrier to Remain
- Existing Retaining Wall

**Potential Barriers**

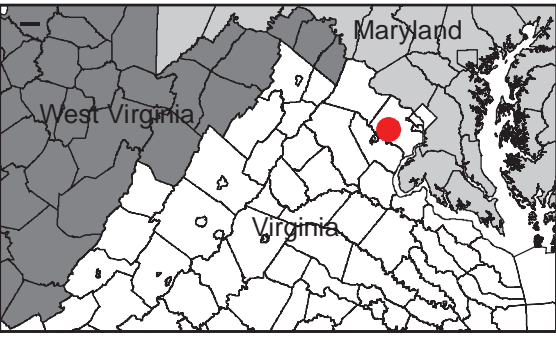
- Barrier Feasible not Reasonable
- Barrier Feasible and Reasonable

**Legend**

- Monitoring Site
- Preliminary Design Edge of Pavement
- 66 dB(A) Contour
- CNE Boundary
- 500' Study Area

0 500 1,000  
Feet

*Aerial imagery courtesy of Fairfax County GIS Imagery Service*



**Fairfax County Parkway Widening Project**

VDOT UPC: 107937  
VDOT Project Number: 0286-029-259, P101

**Preliminary Noise Analysis**  
Fairfax County, Virginia

**Figure: 2 - 4**  
**Detailed Study Area Map**





**Modeled Receivers**

*Behind Potential Barriers*

- Not Impacted not Benefited
- Benefited not Impacted
- Impacted and Benefited
- Impacted not Benefited
- Proposed Acquisition

*Behind Existing Barriers*

- Not Impacted

**Existing Barriers**

- Existing Barrier to Remain
- Existing Retaining Wall

**Potential Barriers**

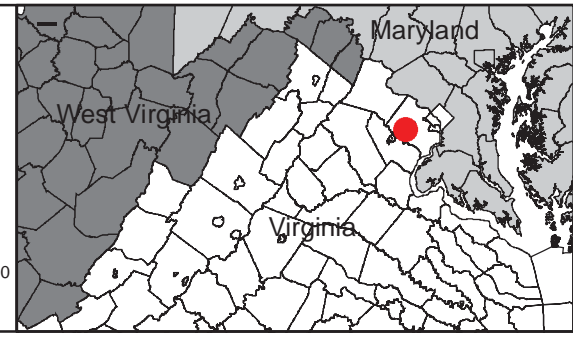
- Barrier Feasible not Reasonable
- Barrier Feasible and Reasonable

**Legend**

- Monitoring Site
- Preliminary Design Edge of Pavement
- 66 dB(A) Contour
- CNE Boundary
- 500' Study Area

0 500 1,000  
Feet

*Aerial Imagery courtesy of Fairfax County GIS Imagery Service*



**Fairfax County Parkway Widening Project**

VDOT UPC: 107937  
VDOT Project Number: 0286-029-259, P101

**Preliminary Noise Analysis**  
Fairfax County, Virginia

**Figure: 2 - 5**  
**Detailed Study Area Map**





**Modeled Receivers**

*Behind Potential Barriers*

- Not Impacted not Benefited
- Benefited not Impacted
- Impacted and Benefited
- Impacted not Benefited
- Proposed Acquisition

*Behind Existing Barriers*

- Not Impacted

**Existing Barriers**

- Existing Barrier to Remain
- Existing Retaining Wall

**Potential Barriers**

- Barrier Feasible not Reasonable
- Barrier Feasible and Reasonable

**Monitoring Site**

- Monitoring Site
- Alternative 1A Preliminary Design Edge of Pavement
- 66 dB(A) Contour
- CNE Boundary
- 500' Study Area

0 500 1,000  
Feet  
Aerial imagery courtesy of Fairfax County GIS Imagery Service



**Fairfax County Parkway Widening Project**

VDOT UPC: 107937  
VDOT Project Number: 0286-029-259, P101

**Preliminary Noise Analysis**  
Fairfax County, Virginia

**Figure: 2 - 6a**  
**Detailed Study Area Map**





**Modeled Receivers**

*Behind Potential Barriers*

- Not Impacted not Benefited
- Benefited not Impacted
- Impacted and Benefited
- Impacted not Benefited
- Proposed Acquisition

*Behind Existing Barriers*

- Not Impacted

**Existing Barriers**

- Existing Barrier to Remain
- Existing Retaining Wall

**Potential Barriers**

- Barrier Feasible not Reasonable
- Barrier Feasible and Reasonable

**Monitoring Site**

- Monitoring Site

**Alternative 1A Preliminary Design Edge of Pavement**

- Alternative 1A Preliminary Design Edge of Pavement

**66 dB(A) Contour**

- 66 dB(A) Contour

**CNE Boundary**

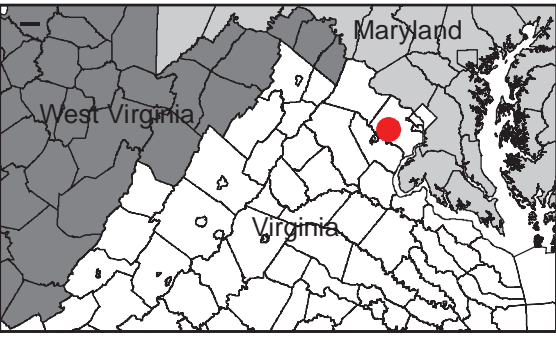
- CNE Boundary

**500' Study Area**

- 500' Study Area

0 500 1,000  
Feet

*Aerial imagery courtesy of Fairfax County GIS Imagery Service*



**Fairfax County Parkway Widening Project**

VDOT UPC: 107937  
VDOT Project Number: 0286-029-259, P101

**Preliminary Noise Analysis**  
Fairfax County, Virginia

**Figure: 2 - 7a**  
**Detailed Study Area Map**

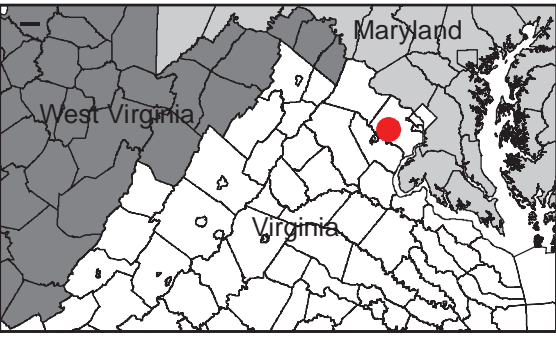




<p><b>Modeled Receivers</b></p> <p><i>Behind Potential Barriers</i></p> <ul style="list-style-type: none"> <li> Not Impacted not Benefited</li> <li> Benefited not Impacted</li> <li> Impacted and Benefited</li> <li> Impacted not Benefited</li> <li> Proposed Acquisition</li> </ul> <p><i>Behind Existing Barriers</i></p> <ul style="list-style-type: none"> <li> Not Impacted</li> </ul>	<p><b>Existing Barriers</b></p> <ul style="list-style-type: none"> <li> Existing Barrier to Remain</li> <li> Existing Retaining Wall</li> </ul> <p><b>Potential Barriers</b></p> <ul style="list-style-type: none"> <li> Barrier Feasible not Reasonable</li> <li> Barrier Feasible and Reasonable</li> </ul>	<ul style="list-style-type: none"> <li> Monitoring Site</li> <li> Alternative 2 Preliminary Design Edge of Pavement</li> <li> 66 dB(A) Contour</li> <li> CNE Boundary</li> <li> 500' Study Area</li> </ul>
--	---	--

0      500      1,000  
Feet

Aerial Imagery courtesy of Fairfax County GIS Imagery Service



**Fairfax County Parkway Widening Project**

VDOT UPC: 107937  
VDOT Project Number: 0286-029-259, P101

**Preliminary Noise Analysis**  
Fairfax County, Virginia

**Figure: 2 - 6b**  
**Detailed Study Area Map**

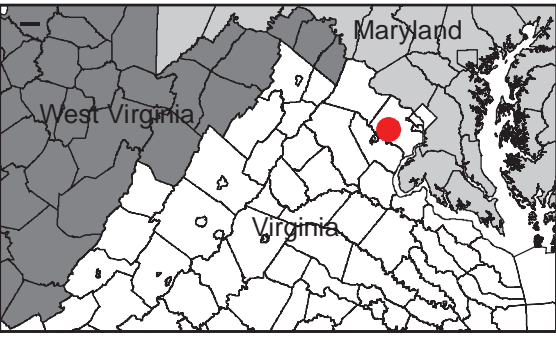




<p><b>Modeled Receivers</b></p> <p><i>Behind Potential Barriers</i></p> <ul style="list-style-type: none"> <li> Not Impacted not Benefited</li> <li> Benefited not Impacted</li> <li> Impacted and Benefited</li> <li> Impacted not Benefited</li> <li> Proposed Acquisition</li> </ul> <p><i>Behind Existing Barriers</i></p> <ul style="list-style-type: none"> <li> Not Impacted</li> </ul>	<p><b>Existing Barriers</b></p> <ul style="list-style-type: none"> <li> Existing Barrier to Remain</li> <li> Existing Retaining Wall</li> </ul> <p><b>Potential Barriers</b></p> <ul style="list-style-type: none"> <li> Barrier Feasible not Reasonable</li> <li> Barrier Feasible and Reasonable</li> </ul>	<ul style="list-style-type: none"> <li> Monitoring Site</li> <li> Alternative 2 Preliminary Design Edge of Pavement</li> <li> 66 dB(A) Contour</li> <li> CNE Boundary</li> <li> 500' Study Area</li> </ul>
--	---	--

0 500 1,000  
Feet

Aerial imagery courtesy of Fairfax County GIS Imagery Service



**Fairfax County Parkway Widening Project**

VDOT UPC: 107937  
VDOT Project Number: 0286-029-259, P101

**Preliminary Noise Analysis**  
Fairfax County, Virginia

**Figure: 2 - 7b**  
**Detailed Study Area Map**

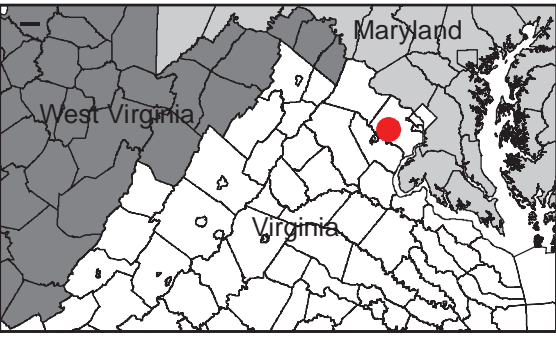




<p><b>Modeled Receivers</b></p> <p><i>Behind Potential Barriers</i></p> <ul style="list-style-type: none"> <li> Not Impacted not Benefited</li> <li> Benefited not Impacted</li> <li> Impacted and Benefited</li> <li> Impacted not Benefited</li> <li> Proposed Acquisition</li> </ul> <p><i>Behind Existing Barriers</i></p> <ul style="list-style-type: none"> <li> Not Impacted</li> </ul>	<p><b>Existing Barriers</b></p> <ul style="list-style-type: none"> <li> Existing Barrier to Remain</li> <li> Existing Retaining Wall</li> </ul> <p><b>Potential Barriers</b></p> <ul style="list-style-type: none"> <li> Barrier Feasible not Reasonable</li> <li> Barrier Feasible and Reasonable</li> </ul>	<ul style="list-style-type: none"> <li> Monitoring Site</li> <li> Alternative 2D Preliminary Design Edge of Pavement</li> <li> 66 dB(A) Contour</li> <li> CNE Boundary</li> <li> 500' Study Area</li> </ul>
--	---	---

0      500      1,000  
Feet

Aerial imagery courtesy of Fairfax County GIS Imagery Service



**Fairfax County Parkway Widening Project**

VDOT UPC: 107937  
VDOT Project Number: 0286-029-259, P101

**Preliminary Noise Analysis**  
Fairfax County, Virginia

**Figure: 2 - 6c**  
**Detailed Study Area Map**

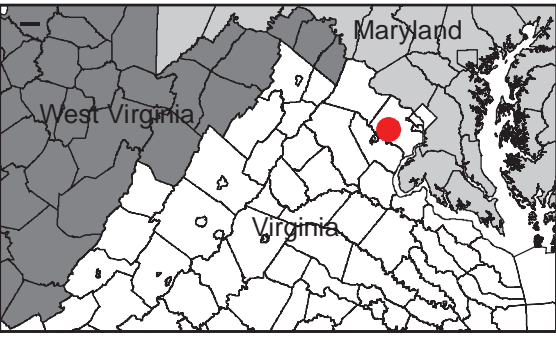




<p><b>Modeled Receivers</b></p> <p><i>Behind Potential Barriers</i></p> <ul style="list-style-type: none"> <li> Not Impacted not Benefited</li> <li> Benefited not Impacted</li> <li> Impacted and Benefited</li> <li> Impacted not Benefited</li> <li> Proposed Acquisition</li> </ul> <p><i>Behind Existing Barriers</i></p> <ul style="list-style-type: none"> <li> Not Impacted</li> </ul>	<p><b>Existing Barriers</b></p> <ul style="list-style-type: none"> <li> Existing Barrier to Remain</li> <li> Existing Retaining Wall</li> </ul> <p><b>Potential Barriers</b></p> <ul style="list-style-type: none"> <li> Barrier Feasible not Reasonable</li> <li> Barrier Feasible and Reasonable</li> </ul>	<ul style="list-style-type: none"> <li> Monitoring Site</li> <li> Alternative 2D Preliminary Design Edge of Pavement</li> <li> 66 dB(A) Contour</li> <li> CNE Boundary</li> <li> 500' Study Area</li> </ul>
--	---	---

0                      500                      1,000  
Feet

Aerial imagery courtesy of Fairfax County GIS Imagery Service



**Fairfax County Parkway Widening Project**

VDOT UPC: 107937  
VDOT Project Number: 0286-029-259, P101

**Preliminary Noise Analysis**  
Fairfax County, Virginia

**Figure: 2 - 7c**  
**Detailed Study Area Map**





**Modeled Receivers**

*Behind Potential Barriers*

- Not Impacted not Benefited
- Benefited not Impacted
- Impacted and Benefited
- Impacted not Benefited
- Proposed Acquisition

*Behind Existing Barriers*

- Not Impacted

**Existing Barriers**

- Existing Barrier to Remain
- Existing Retaining Wall

**Potential Barriers**

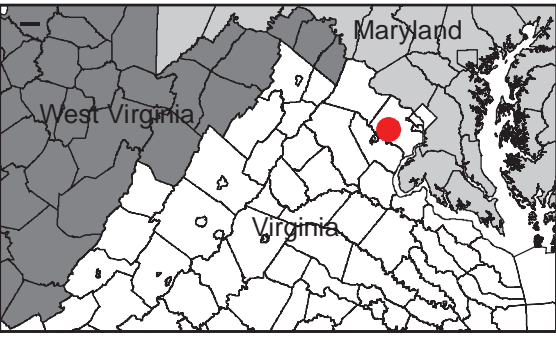
- Barrier Feasible not Reasonable
- Barrier Feasible and Reasonable

**Legend**

- Monitoring Site
- Preliminary Design Edge of Pavement
- 66 dB(A) Contour
- CNE Boundary
- 500' Study Area

0 500 1,000  
Feet

*Aerial imagery courtesy of Fairfax County GIS Imagery Service*



**Fairfax County Parkway Widening Project**

VDOT UPC: 107937  
VDOT Project Number: 0286-029-259, P101

**Preliminary Noise Analysis**  
Fairfax County, Virginia

**Figure: 2 - 8**  
**Detailed Study Area Map**

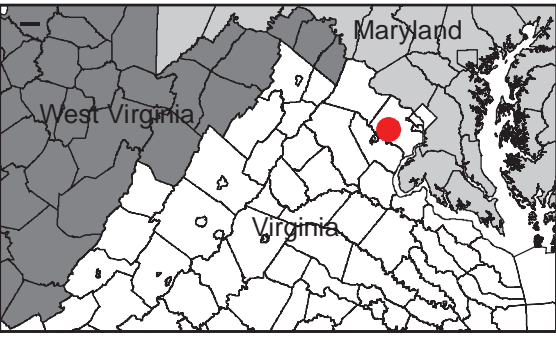




<p><b>Modeled Receivers</b></p> <p><i>Behind Potential Barriers</i></p> <ul style="list-style-type: none"> <li> Not Impacted not Benefited</li> <li> Benefited not Impacted</li> <li> Impacted and Benefited</li> <li> Impacted not Benefited</li> <li> Proposed Acquisition</li> </ul> <p><i>Behind Existing Barriers</i></p> <ul style="list-style-type: none"> <li> Not Impacted</li> </ul>	<p><b>Existing Barriers</b></p> <ul style="list-style-type: none"> <li> Existing Barrier to Remain</li> <li> Existing Retaining Wall</li> </ul> <p><b>Potential Barriers</b></p> <ul style="list-style-type: none"> <li> Barrier Feasible not Reasonable</li> <li> Barrier Feasible and Reasonable</li> </ul>	<ul style="list-style-type: none"> <li> Monitoring Site</li> <li> Preliminary Design Edge of Pavement</li> <li> 66 dB(A) Contour</li> <li> CNE Boundary</li> <li> 500' Study Area</li> </ul>
--	---	--

0      500      1,000  
Feet

Aerial Imagery courtesy of Fairfax County GIS Imagery Service



**Fairfax County Parkway Widening Project**

VDOT UPC: 107937  
VDOT Project Number: 0286-029-259, P101

**Preliminary Noise Analysis**  
Fairfax County, Virginia

**Figure: 2 - 9**  
**Detailed Study Area Map**





**Modeled Receivers**

*Behind Potential Barriers*

- Not Impacted not Benefited
- Benefited not Impacted
- Impacted and Benefited
- Impacted not Benefited
- Proposed Acquisition

*Behind Existing Barriers*

- Not Impacted

**Existing Barriers**

- Existing Barrier to Remain
- Existing Retaining Wall

**Potential Barriers**

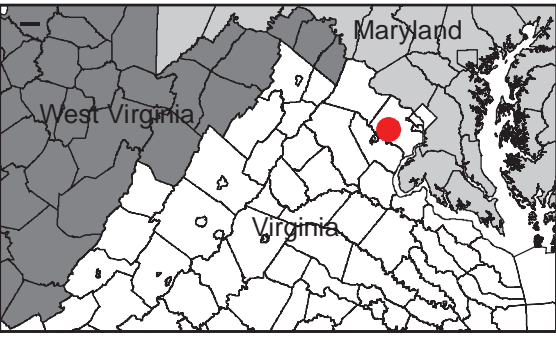
- Barrier Feasible not Reasonable
- Barrier Feasible and Reasonable

**Legend**

- Monitoring Site
- Preliminary Design Edge of Pavement
- 66 dB(A) Contour
- CNE Boundary
- 500' Study Area

0 500 1,000  
Feet

*Aerial imagery courtesy of Fairfax County GIS Imagery Service*



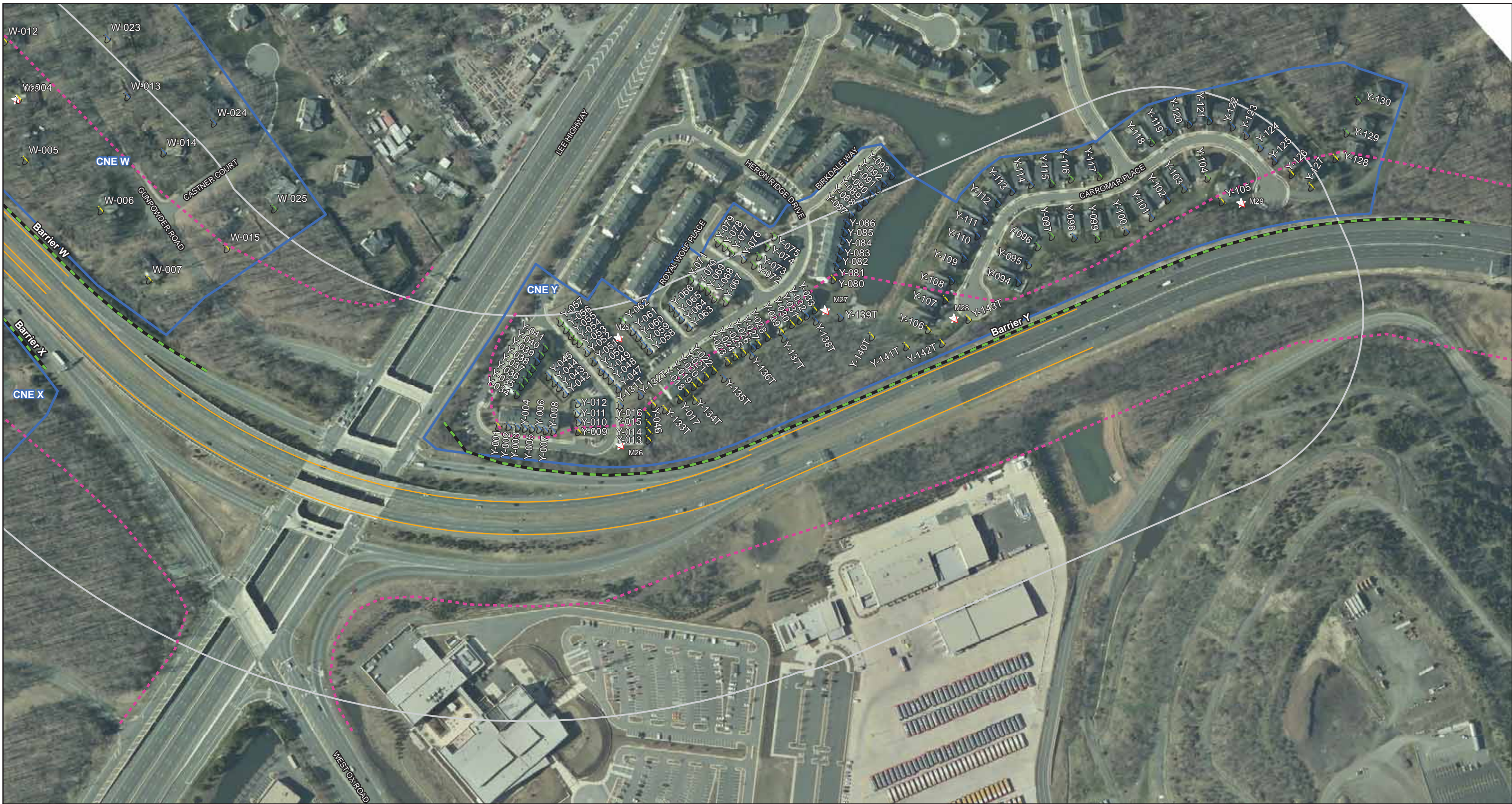
**Fairfax County Parkway Widening Project**

VDOT UPC: 107937  
VDOT Project Number: 0286-029-259, P101

**Preliminary Noise Analysis**  
Fairfax County, Virginia

**Figure: 2 - 10**  
**Detailed Study Area Map**





**Modeled Receivers**

*Behind Potential Barriers*

- Not Impacted not Benefited
- Benefited not Impacted
- Impacted and Benefited
- Impacted not Benefited
- Proposed Acquisition

*Behind Existing Barriers*

- Not Impacted

**Existing Barriers**

- Existing Barrier to Remain
- Existing Retaining Wall

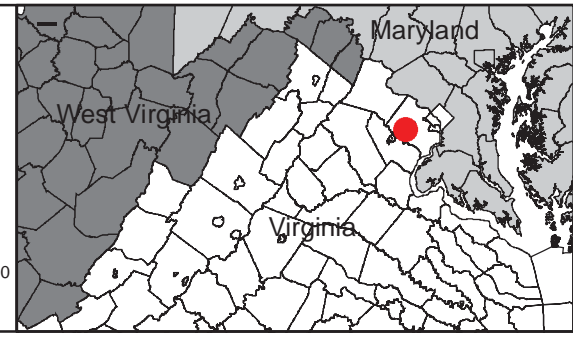
**Potential Barriers**

- Barrier Feasible not Reasonable
- Barrier Feasible and Reasonable

**Monitoring Site**

- Preliminary Design Edge of Pavement
- 66 dB(A) Contour
- CNE Boundary
- 500' Study Area

0 500 1,000  
Feet  
Aerial imagery courtesy of Fairfax County GIS Imagery Service



**Fairfax County Parkway Improvements Project**

VDOT UPC: 107937  
VDOT Project Number: 0286-029-259, P101

**Preliminary Noise Analysis**  
Fairfax County, Virginia

**Figure: 2 - 11**  
**Detailed Study Area Map**