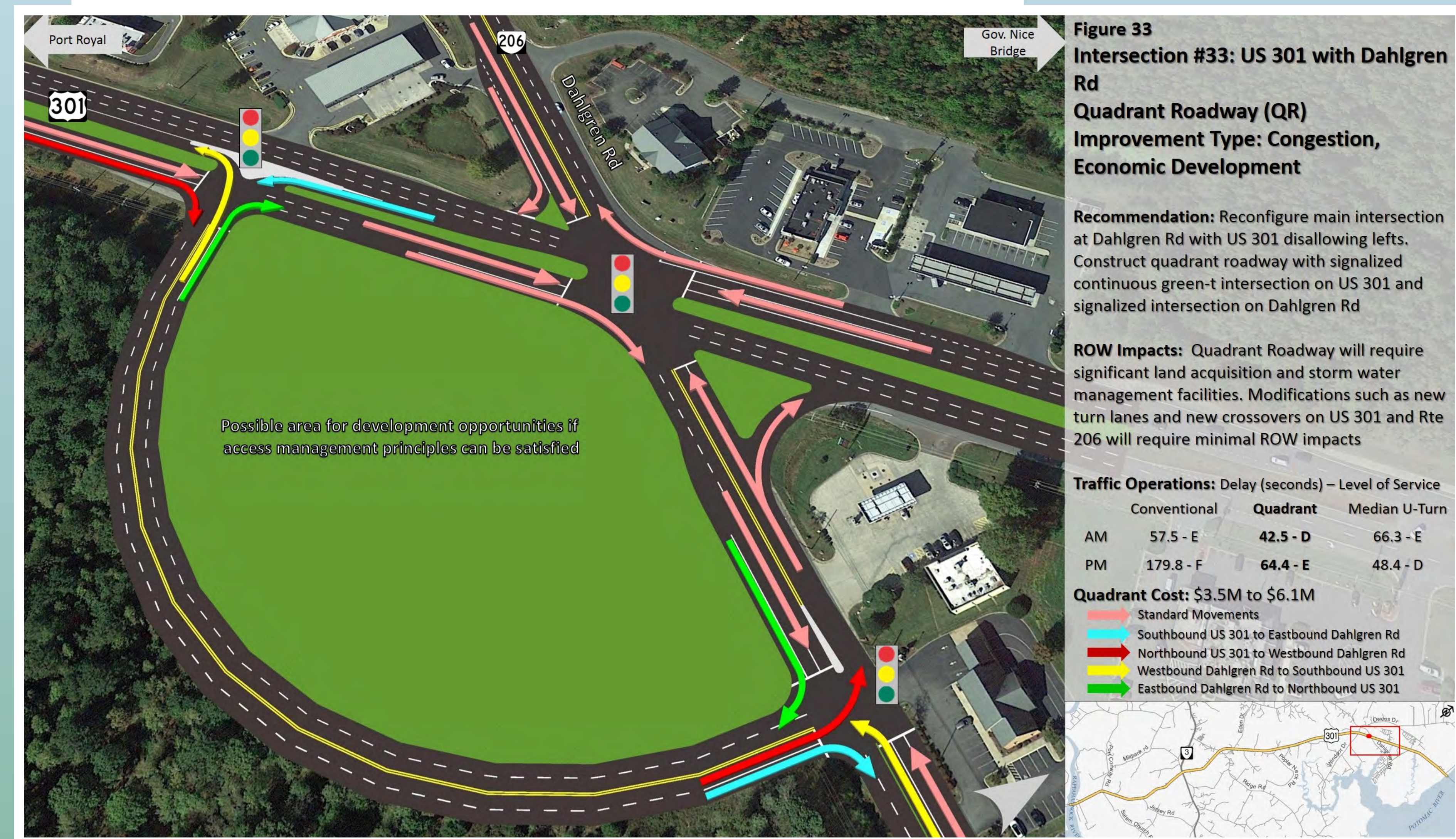


US 301 / ROUTE 207 ARTERIAL PRESERVATION PLAN

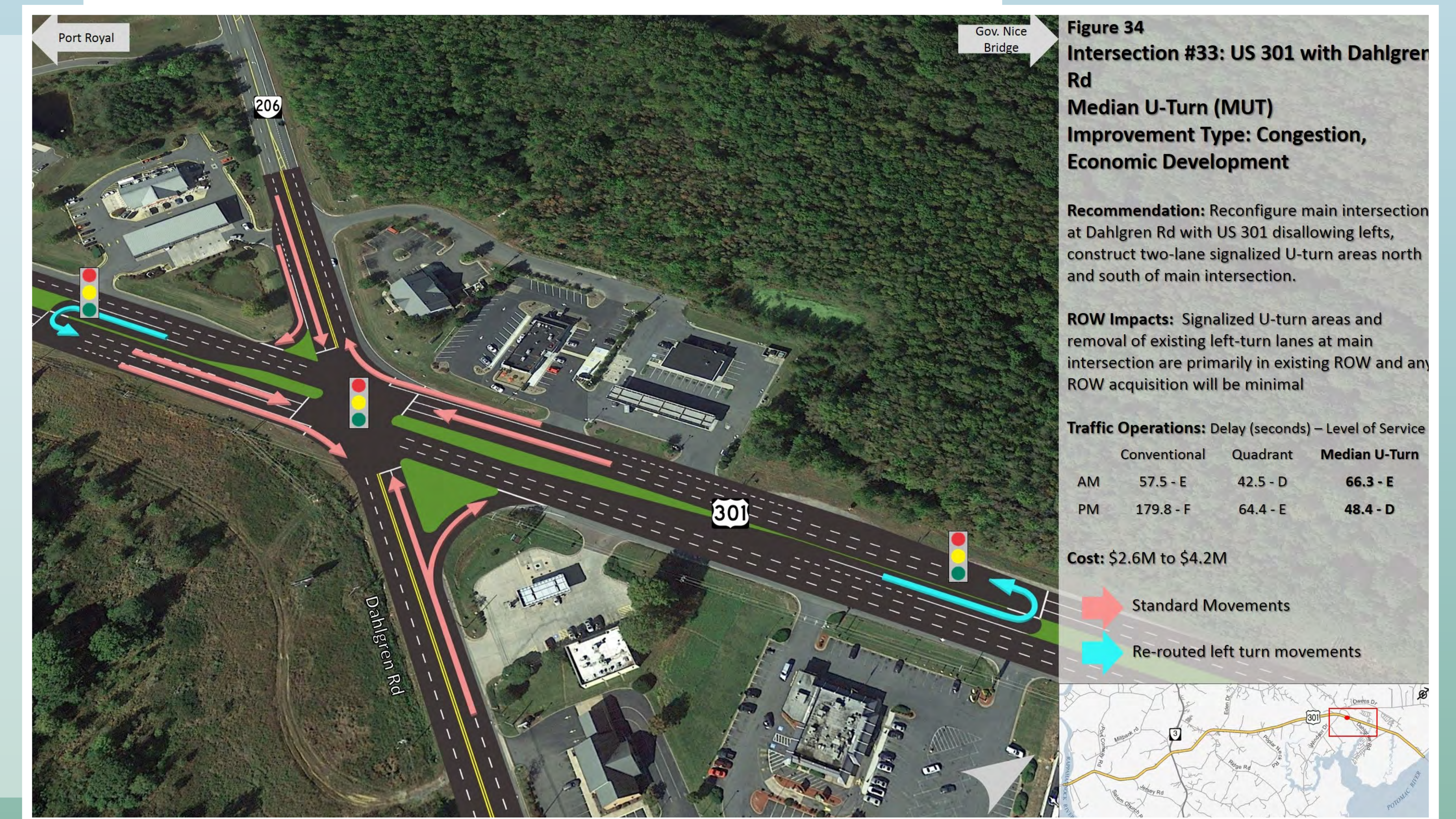
# Final Corridor Recommendations

## King George County

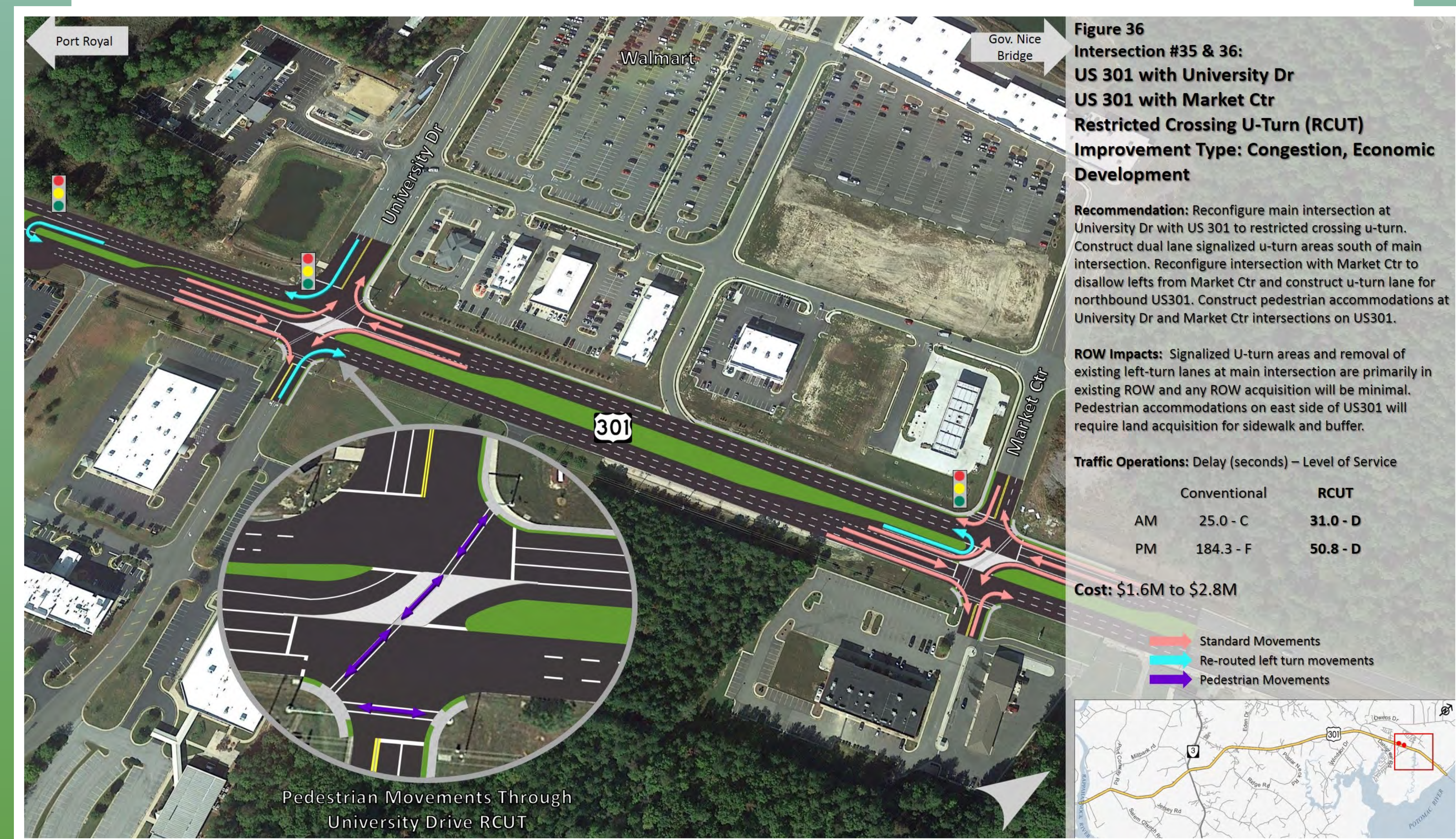
US 301 and Dahlgren Road, Option 1 - Quadrant Road



US 301 and Dahlgren Road, Option 1 - Median U-Turn



US 301 and University Dr and Market Ctr, Option 1 - Restricted Crossing U-Turn



US 301 and Owens Dr - Quadrant Roadway

