



ROUTE 301 AND ROUTE 207 ARTERIAL PRESERVATION PLAN

| Marcie Parker, VDOT Fredericksburg District Engineer

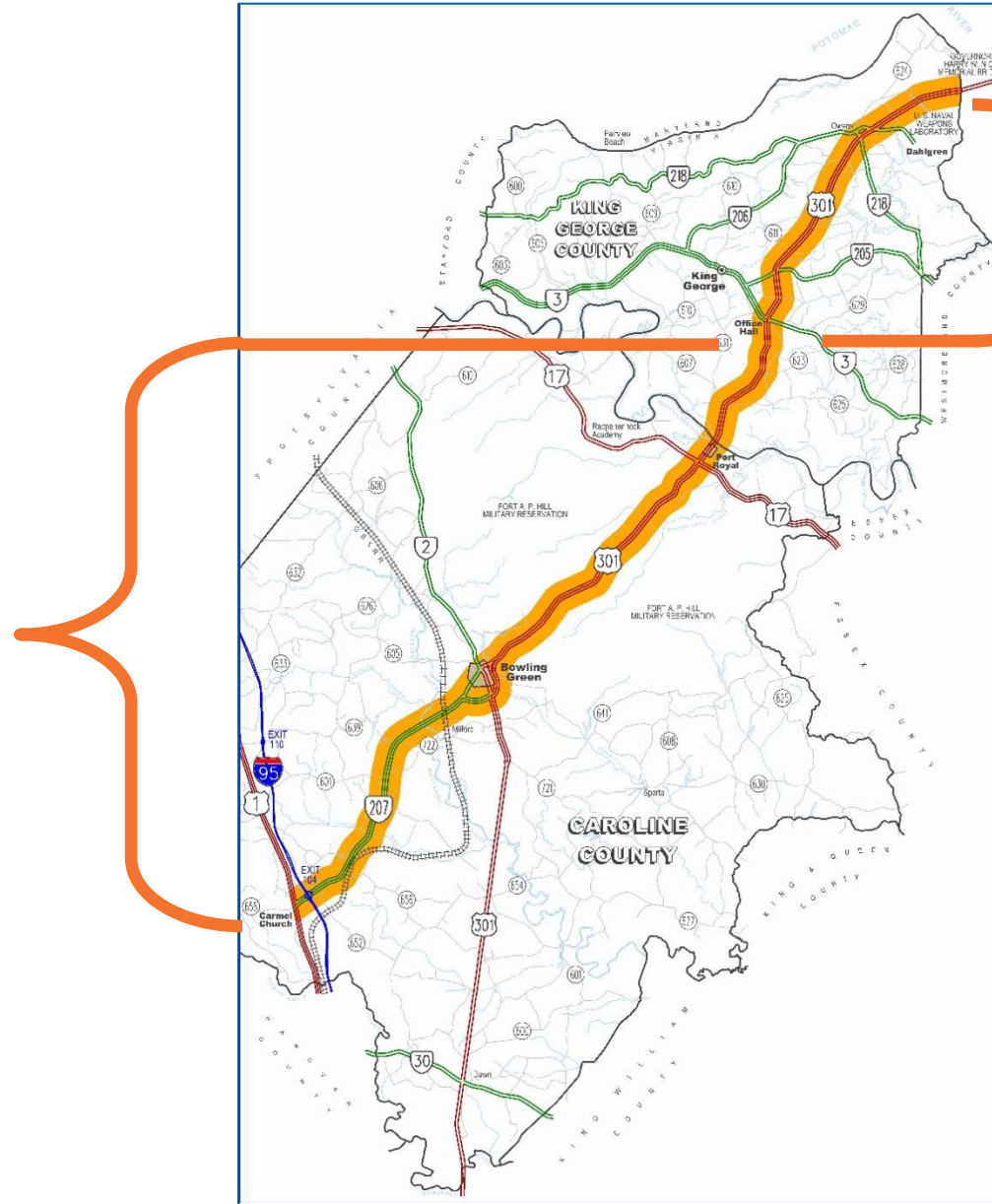
Purpose of the Study

- **Develop safety and capacity improvements**
- **Reduce crash risk and improve traffic flow**
- **Set access management expectations for future development**
- **Create a project list for SMART SCALE or safety funding opportunities**
- **Reduce future retrofit projects**



Study Area

A higher-level safety and access study (29 miles)

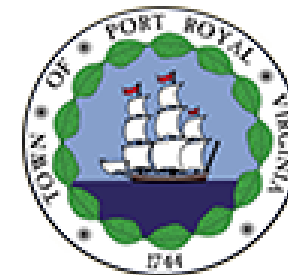


A more detailed access management study (12 miles)

Comprehensive Plan Review



- Reviewed existing Comprehensive Plans in order to keep our recommendations aligned with your regional goals
- 2013 King George Comprehensive Plan
- 2040 FAMPO Comprehensive Plan (rural section)
- George Washington Regional Commission
- VDOT Six-Year plans




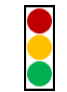



Study Components

Access Management and Safety & Operations Study

- **Existing Conditions**
 - **Crash Analysis**
 - **Traffic Operations**
 - **Access Locations**
 - **Road Geometrics**
- **Future Land Use**
 - **Detailed Land Use Analysis in the northern area**
 - **Assumptions based on FAMPO Model for the southern area**

Preliminary Recommendations


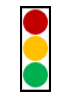



King George County

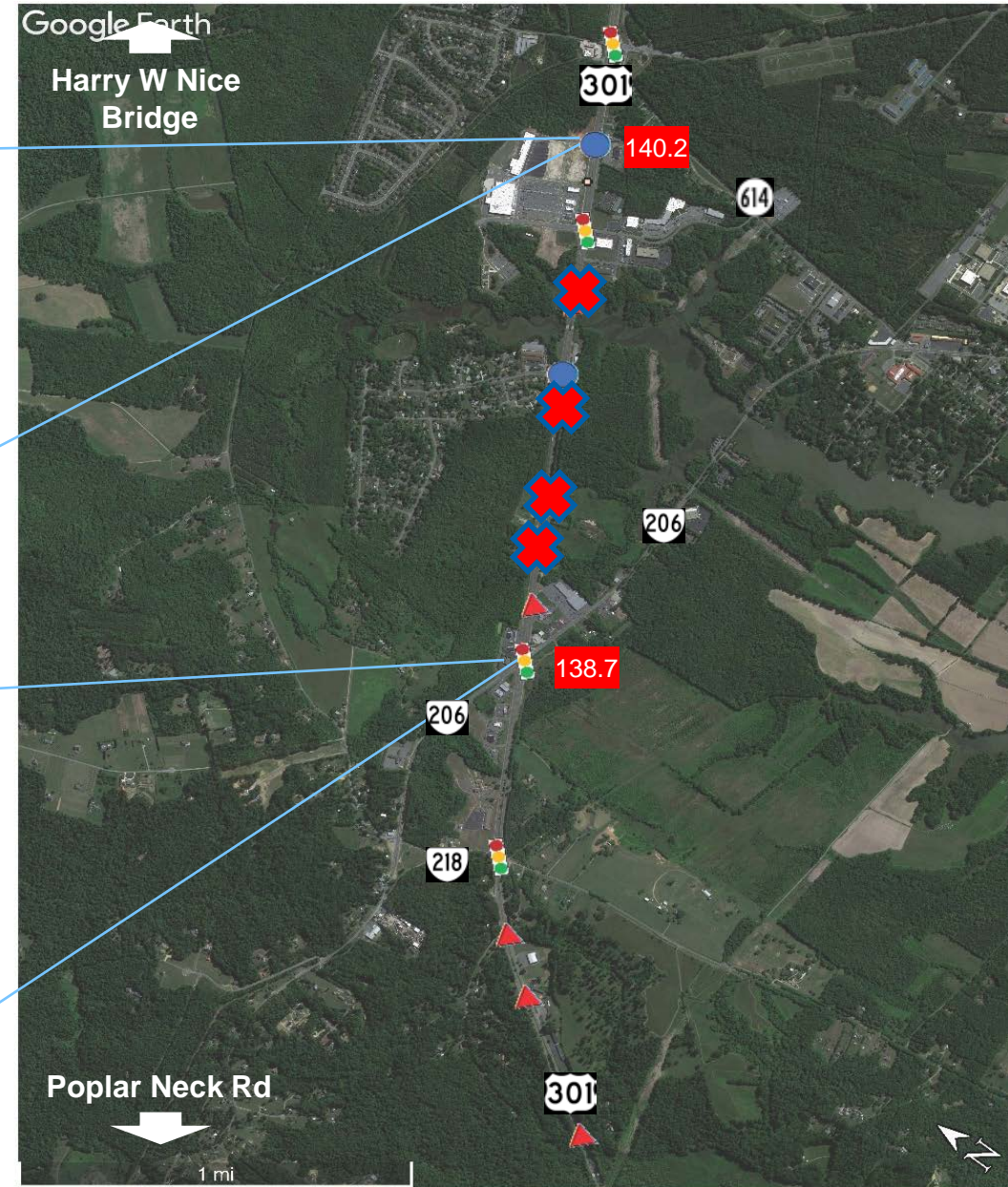
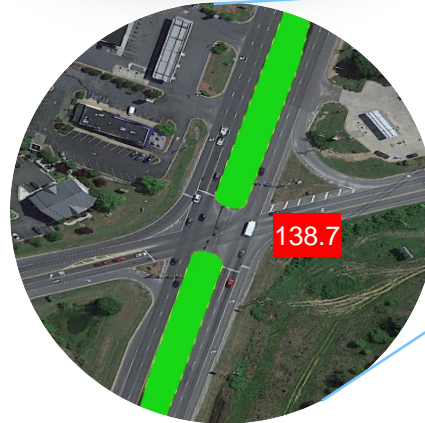
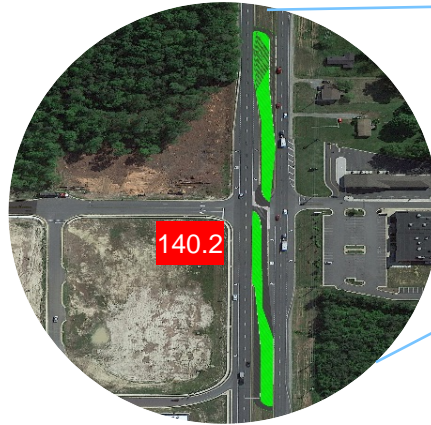
-  Unsignalized Intersection
-  Signalized Intersection
-  Median Crossovers
-  Recommended Crossover Removal
-  Milepost



Preliminary Recommendations

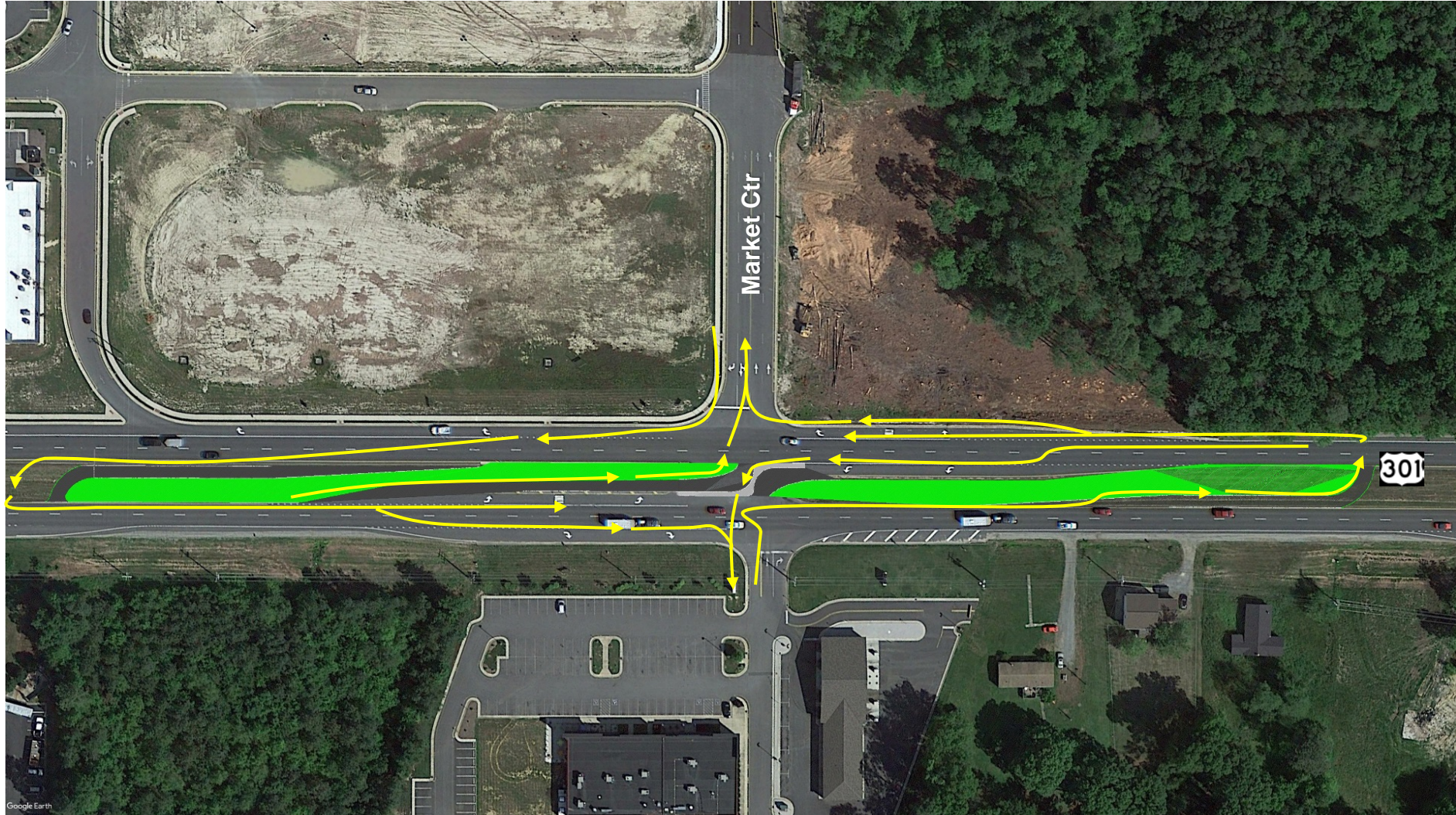
King George County

-  Unsignalized Intersection
-  Signalized Intersection
-  Median Crossovers
-  Recommended Crossover Removal
-  Milepost



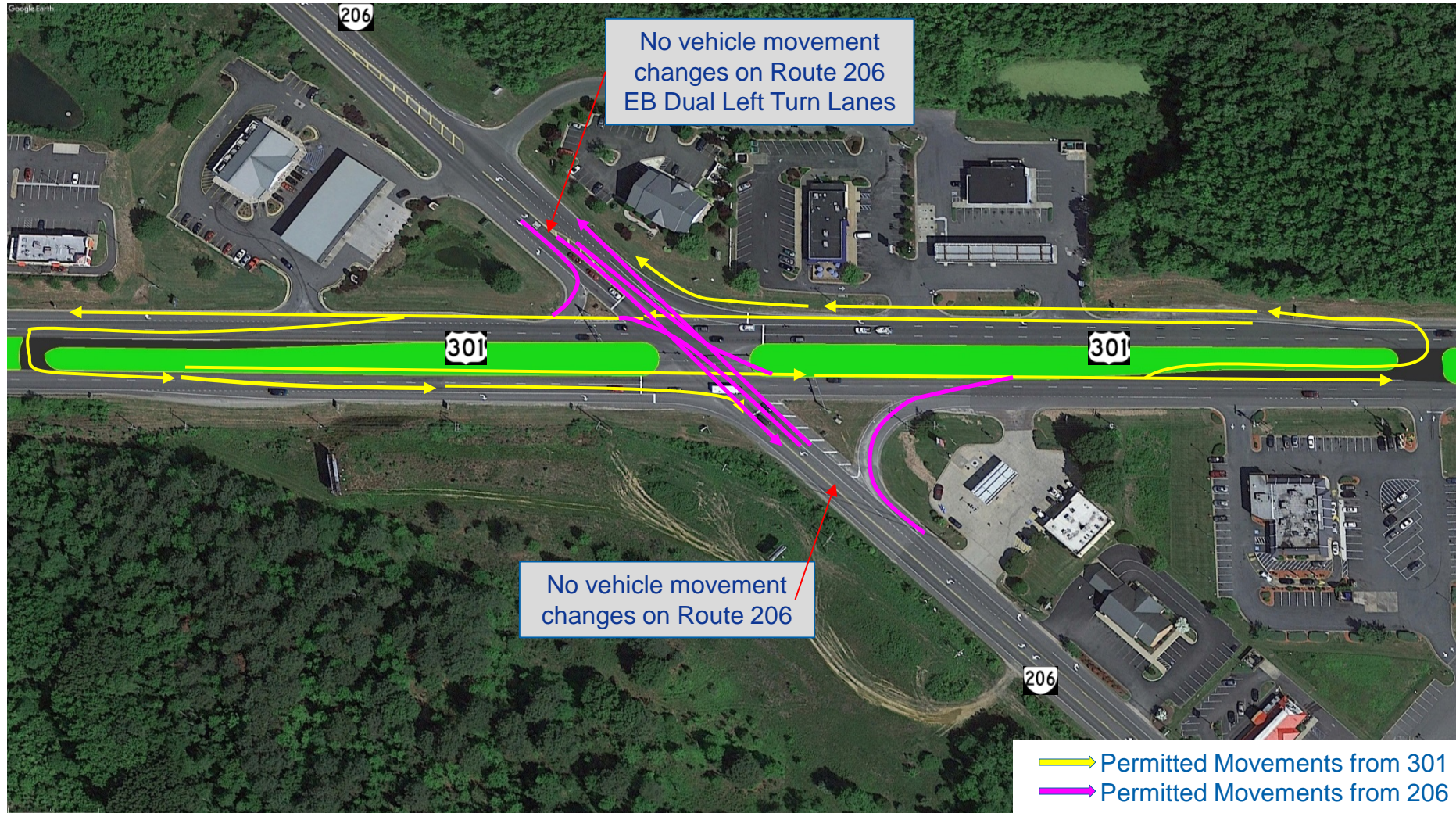
Preliminary Recommendations

King George County – Market Center




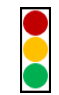



Preliminary Recommendations

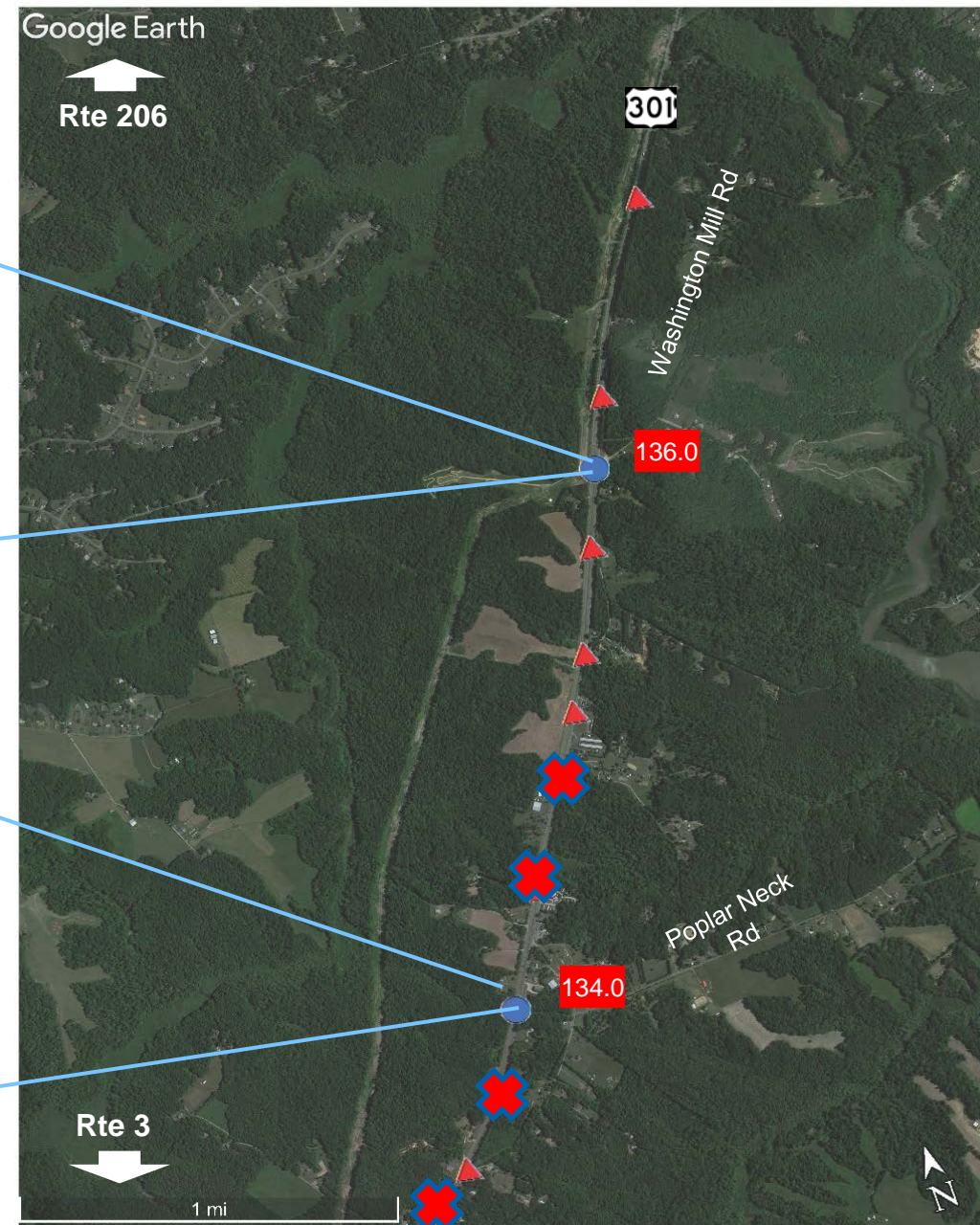
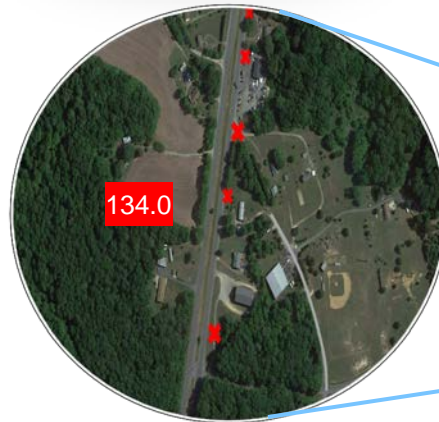
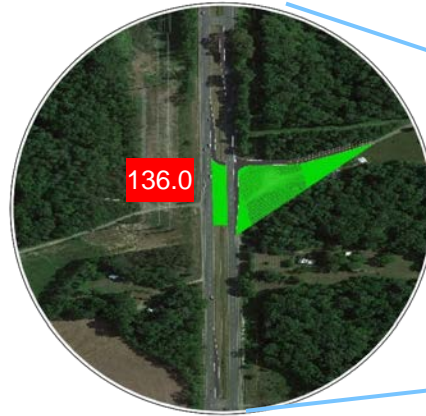
King George County – Route 206 Partial Median U-Turn



Preliminary Recommendations






King George County

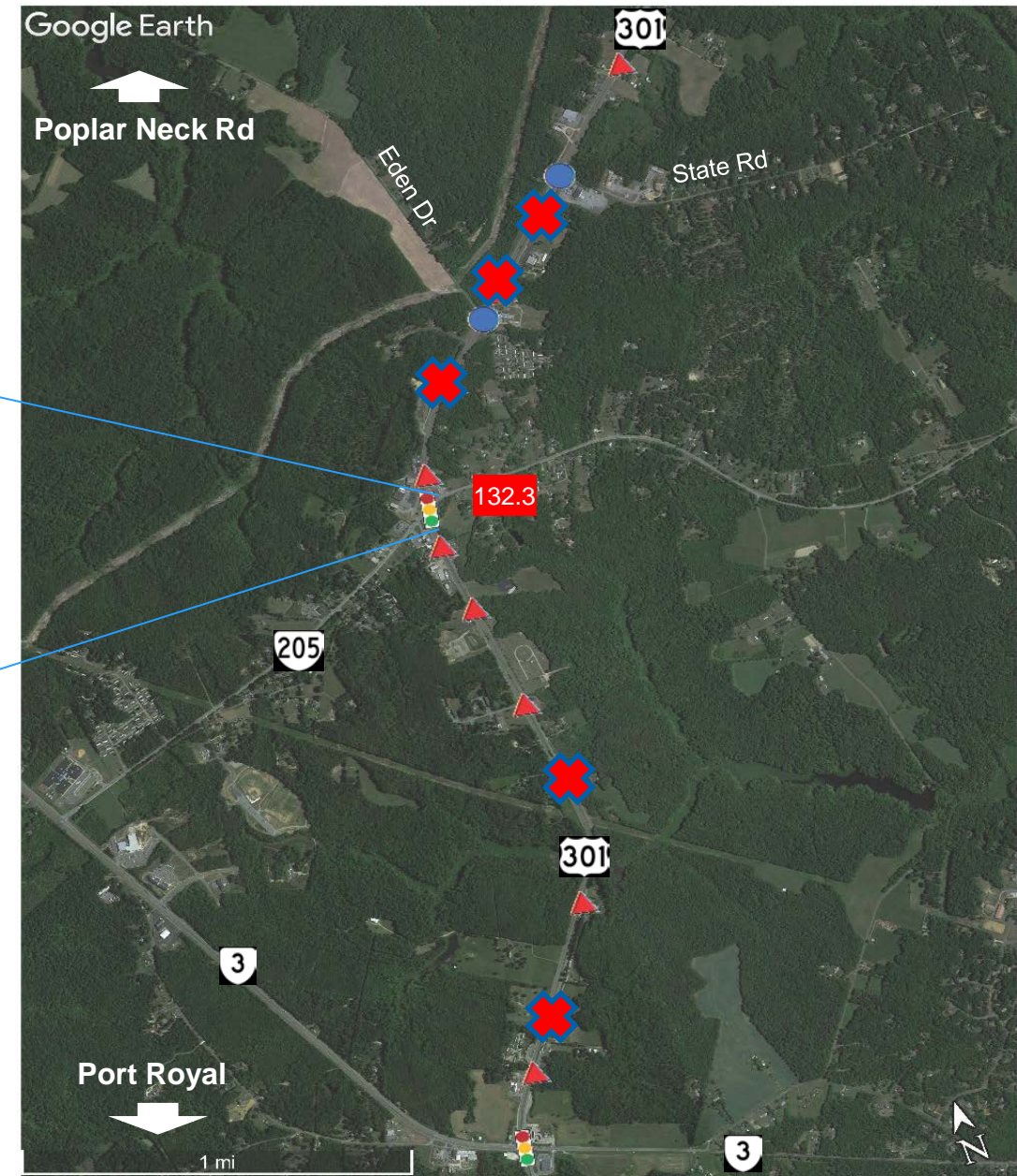
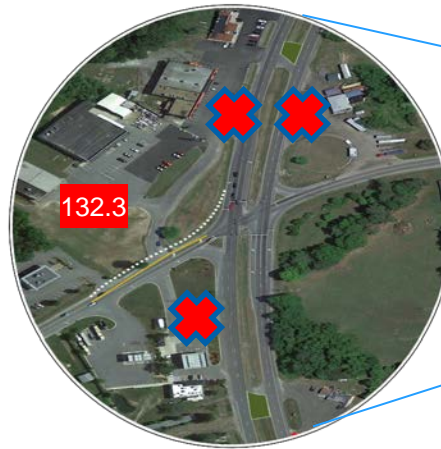
-  Unsignalized Intersection
-  Signalized Intersection
-  Median Crossovers
-  Recommended Crossover Removal
-  Milepost



Preliminary Recommendations

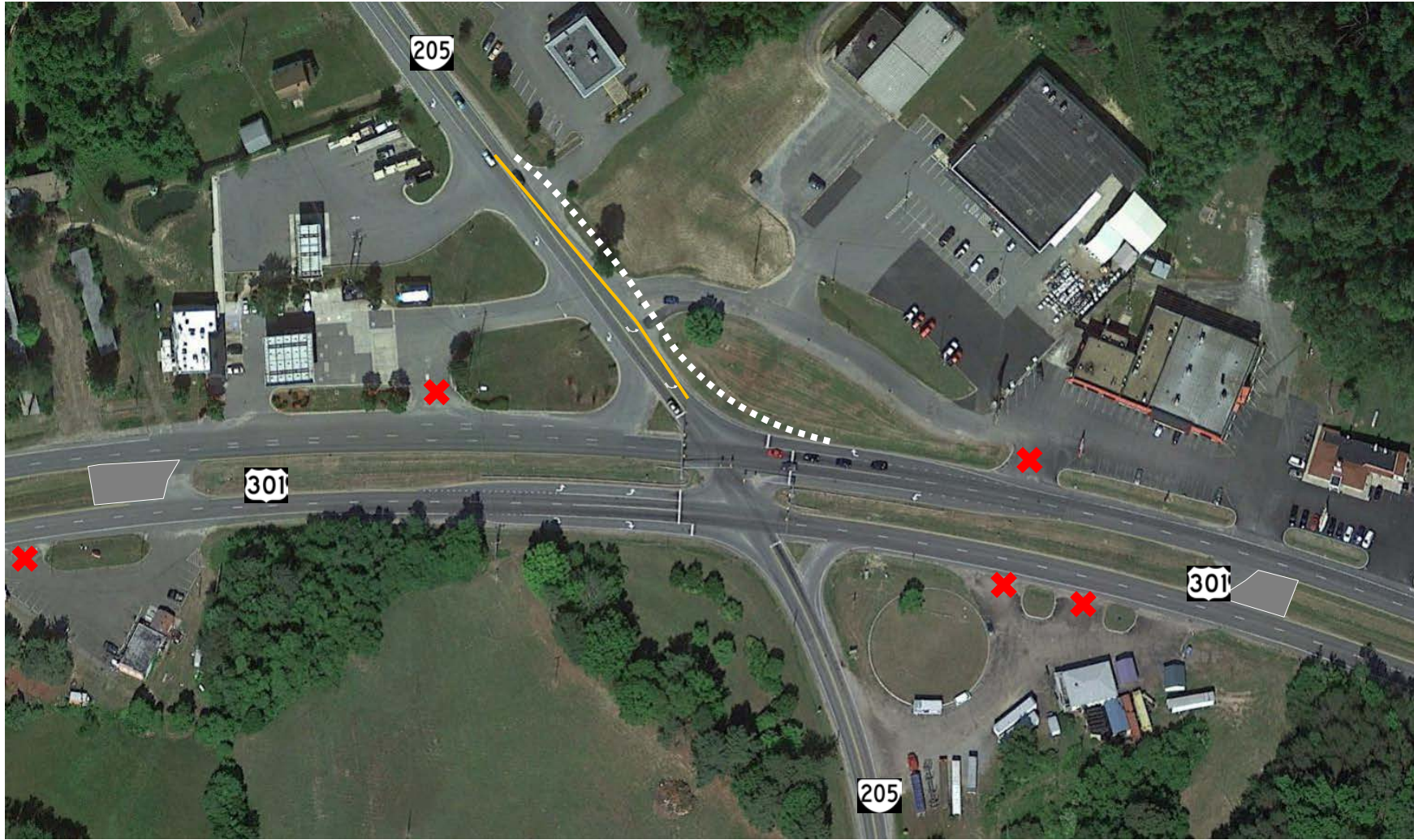
King George County

-  Unsignalized Intersection
-  Signalized Intersection
-  Median Crossovers
-  Recommended Crossover Removal
-  Milepost



Preliminary Recommendations

King George County – Route 205 Dedicated Left Turn Lane



Preliminary Recommendations

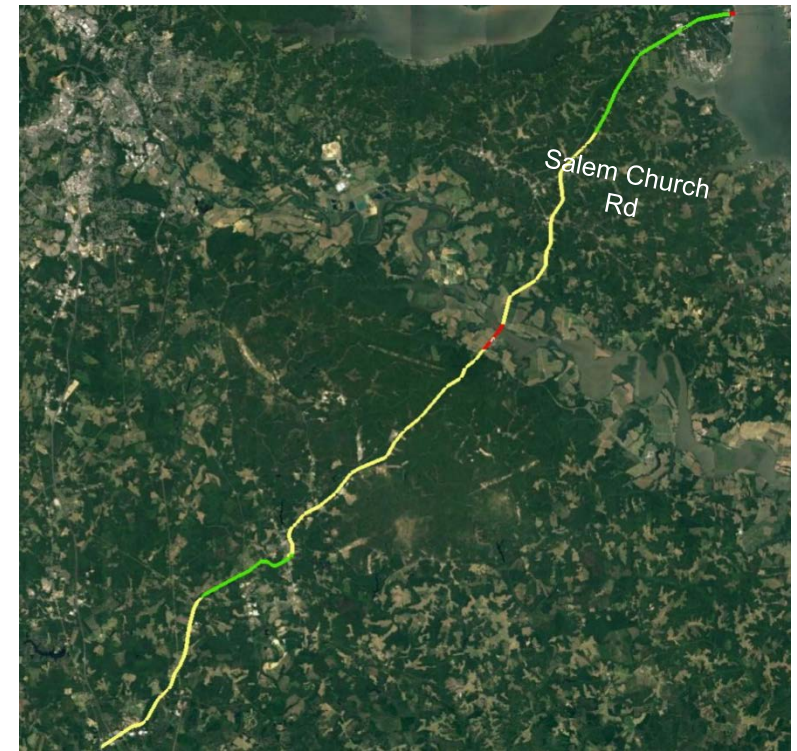
Crossovers and Shoulders

- Assessing crossovers and shoulders for compliance with standards
- If not compliant, identifying needed improvements

- Meets VDOT Requirements
- Meets on one-side of roadway
- Does not meet



Crossovers



Shoulders

Schedule

Milestone	Date
Additional stakeholder meetings on preliminary recommendations	January - March 2018
Final recommendations	Spring 2018
Additional public meetings	Spring 2018
Finalize plan	Summer 2018

Questions?

