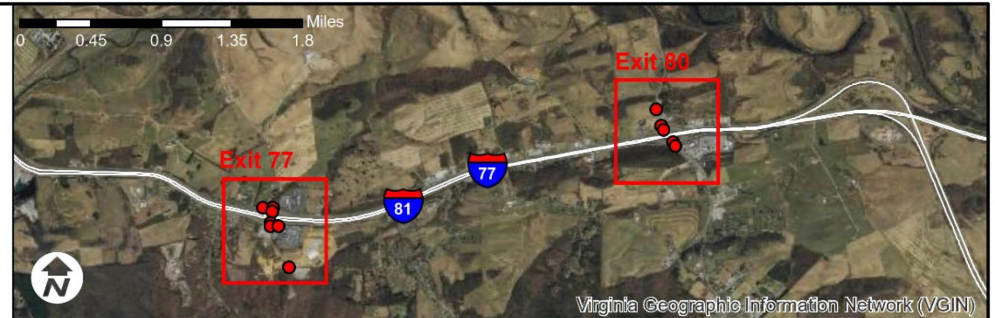


ID	Intersection	Interchange	Control
1	E Lee Highway/F-043 at Kenton Run	Exit 77	Unsignalized
2	E Lee Highway/F-043 at Ready Mix Road/E-Z Stop Western Driveway	Exit 77	Unsignalized
3	I-81 WB On-/Off-Ramps at Ready Mix Road	Exit 77	Unsignalized
4	I-81 EB On-/Off-Ramps at Ready Mix Road	Exit 77	Unsignalized
5	Chapman Road/F-042 at Ready Mix Road	Exit 77	Unsignalized w/ Flashers
6	Chapman Road at Flying J Access	Exit 77	Unsignalized
7	Midway Drive at Ready Mix Road	Exit 77	Unsignalized
8	McDonalds Northern Access at Max Meadows Road/SR 121	Exit 80	Unsignalized
9	E Lee Highway/F-043 at Max Meadows Road/SR 121	Exit 80	Unsignalized
10	I-81 WB On-/Off-Ramps at Max Meadows Road/SR 121	Exit 80	Signalized
11	I-81 EB On-/Off-Ramps at Fort Chiswell Road/US 52	Exit 80	Signalized
12	Chapman Road/F-042 at Fort Chiswell Road/US 52	Exit 80	Signalized

Legend

- Study Area
- Study Area Roads
- Study Area Intersections



Study Area
I-81 Exit-77 and Exit-80 Interchange Improvement Operational Analysis and Safety Study
 Wythe County, VA

FIGURE
1